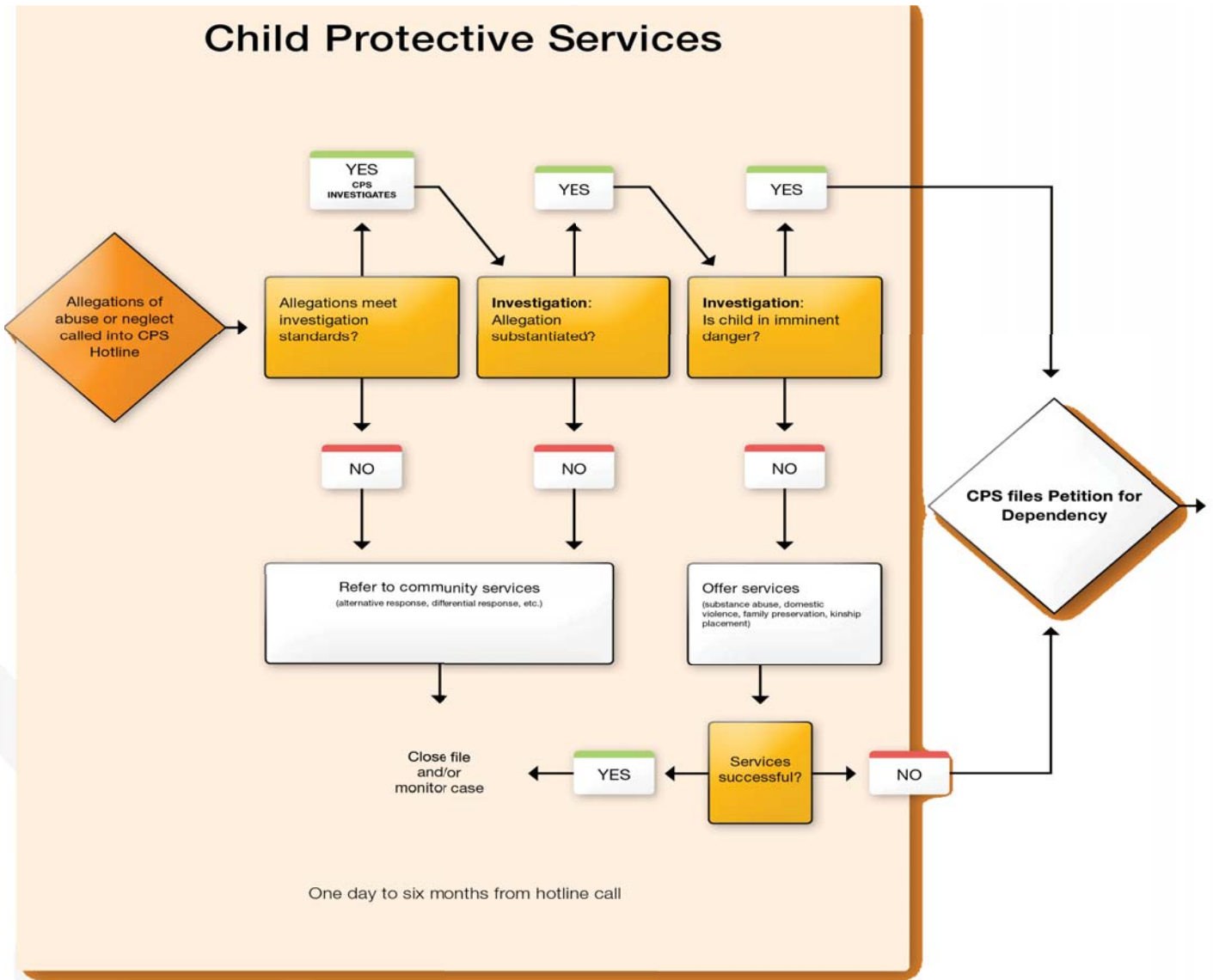


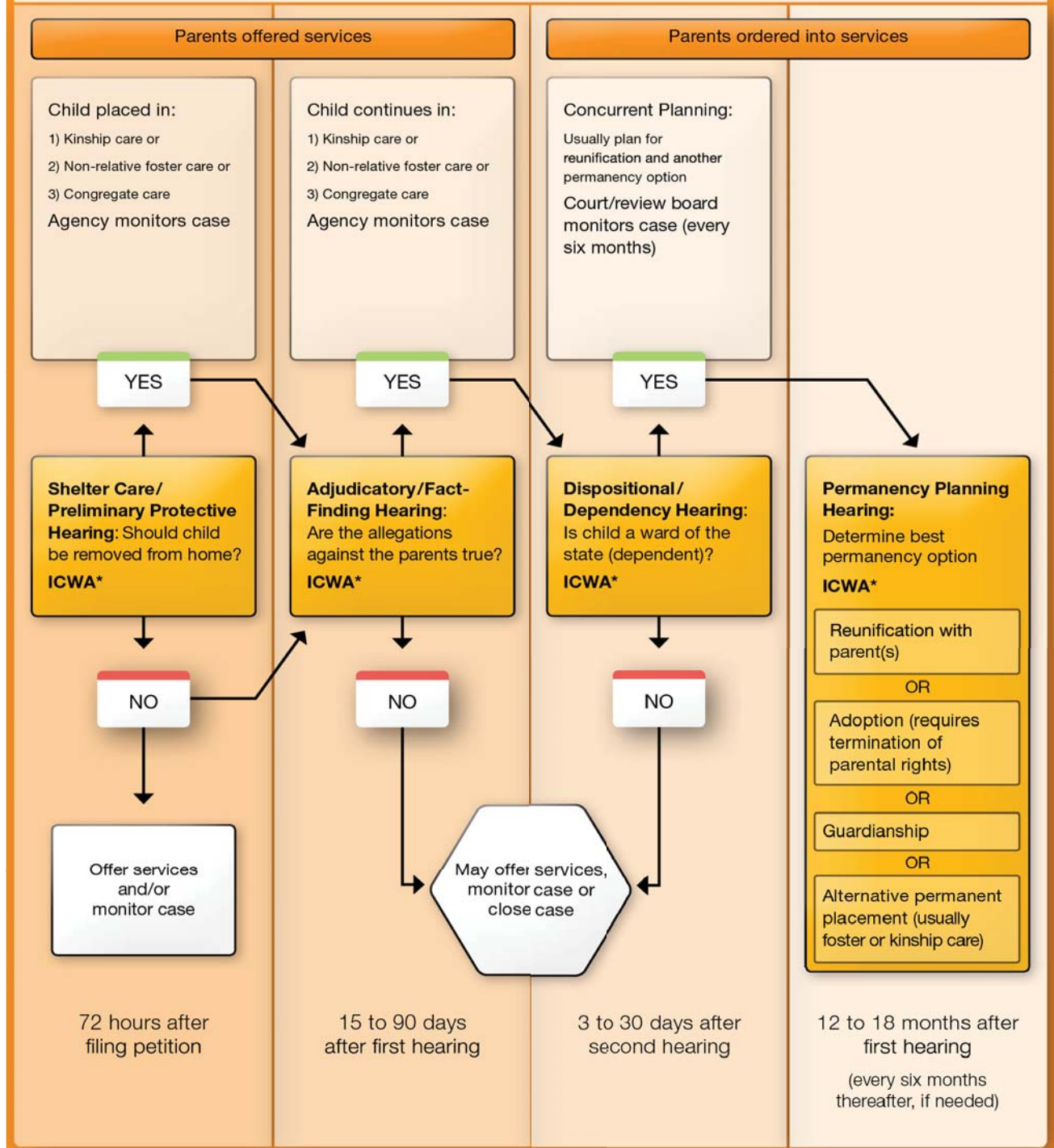
Casey Family Programs Child Welfare Chart (for Activity 1G)

During the classroom session, as the facilitator describes the process that a child welfare case takes in your state, record the names of hearings and timeframes on the Child Welfare Chart given below:

How Children Move Through the Child Welfare System



Child Welfare Courts



*Indian Child Welfare Act (ICWA)

State must notify tribes of youth with native ancestry at each of these points. Tribe may choose to:

- Take over jurisdiction
- Transfer case to tribal court
- Become a party to case but leave it under state's jurisdiction